

SESMESH

Instruction Manual

I Dimensions

NO	MODEL	L(mm)	W(mm)	H(mm)
1	SES1108	70	90	0.45

I How to use

1. Preparations before use

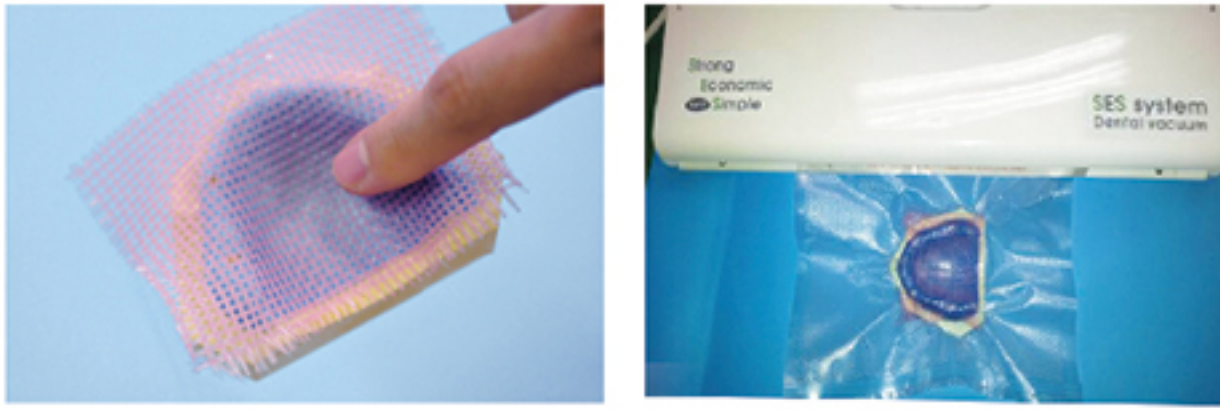
- a. Check if there are any flaws or unwanted substances inside the product before use.
- b. Read the instruction thoroughly.

2. How to use

- a. Pour wax onto a plaster cast
- b. Remove wax on a certain place where resin is going to be spread.

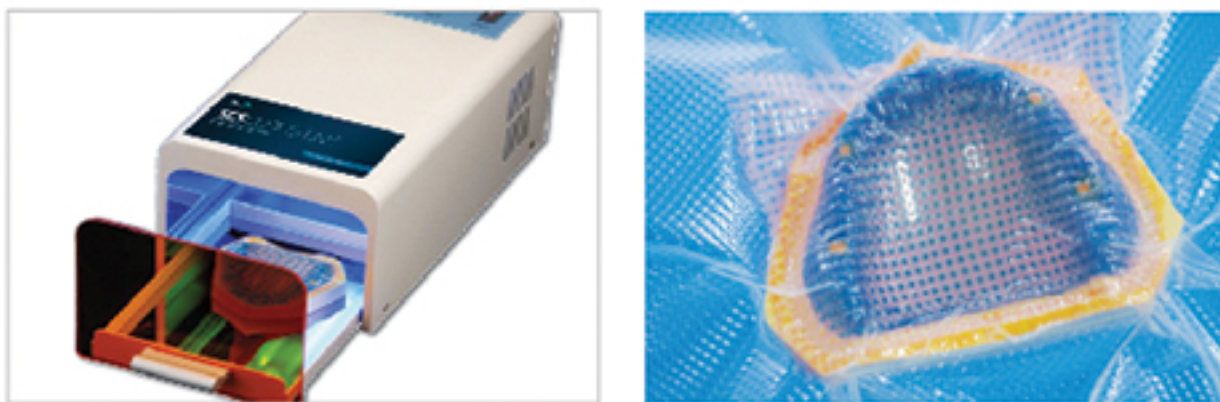


- c. Spread resin on the groove where the wax was removed.
- d. Put SES on the wax, and then put it into vacuum film.



- e. Using vacuum absorber, fix it onto plaster mold.
- f. React it, together with film, with UV
- g. Together with the model, remove the wax by pouring hot water to the product just as it came out from the curing unit and then separate the mesh.

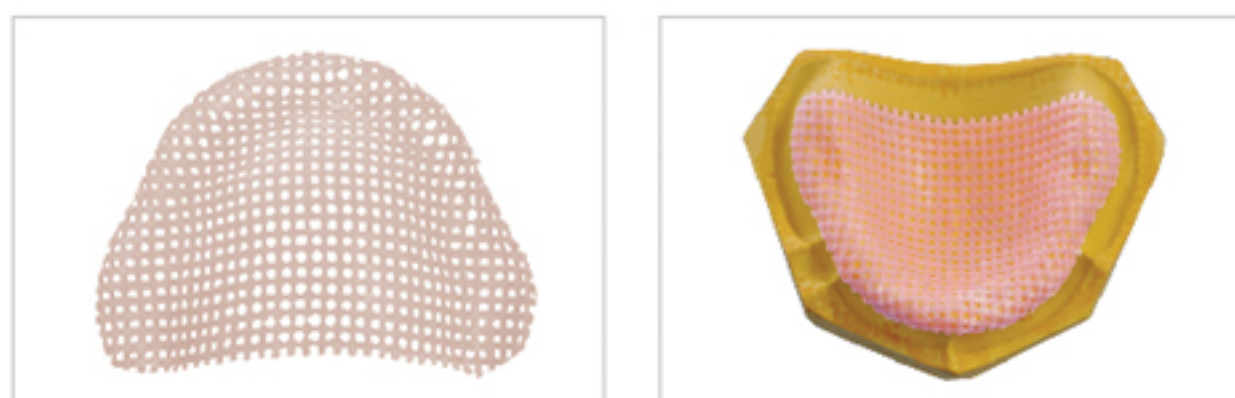
(Caution: do not separate the mesh before pouring hot water. Doing so could cause damage or deformation to the product)



- h. Cut it with scissors to the size that fits into denture.

3. Storage instruction after use

- a. Dispose after single use
- b. Store at a dry place, away from direct sunlight in a room temperature.



Cautions

1. Avoid direct sunlight during the use.
2. Finish within an hour after opening the product.
3. Pay attention that no alien substances mix into the product

INNO DENTAL Co., Ltd.

www.inod.co.kr | inod55@naver.com

Tel : 02-757-1112,779-1113 / Fax : 02-757-9990



SES MESH

Instruction Manual

I Dimensions

NO	MODEL	L(mm)	W(mm)	H(mm)
1	SES1611	70	130	0.45

※ Two upper dentures can be made with one sheet of SES MESH.

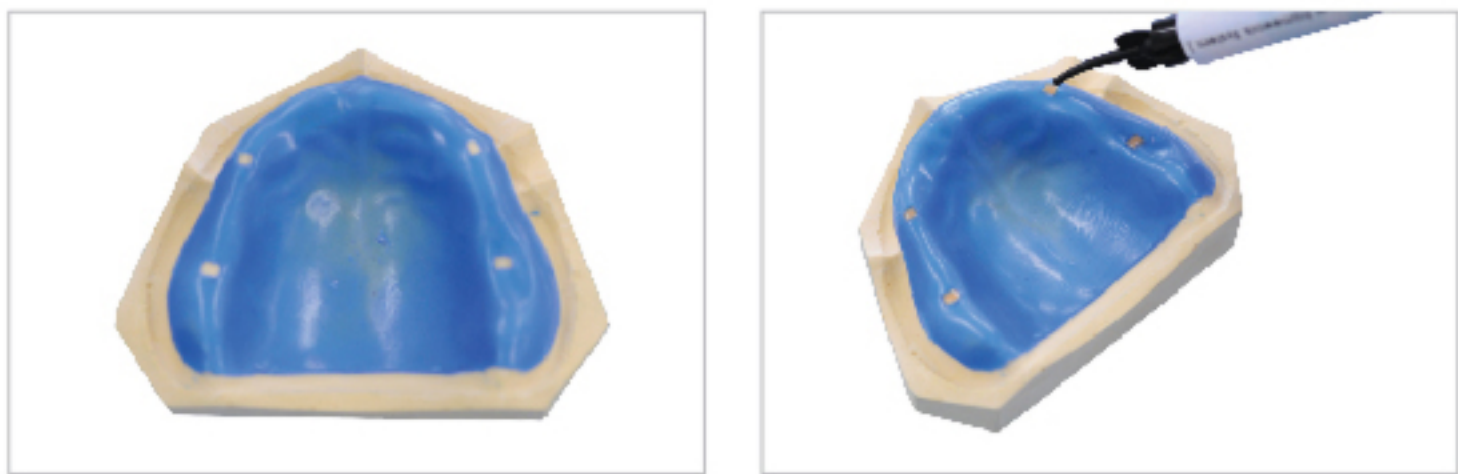
I How to use

1. Preparations before use

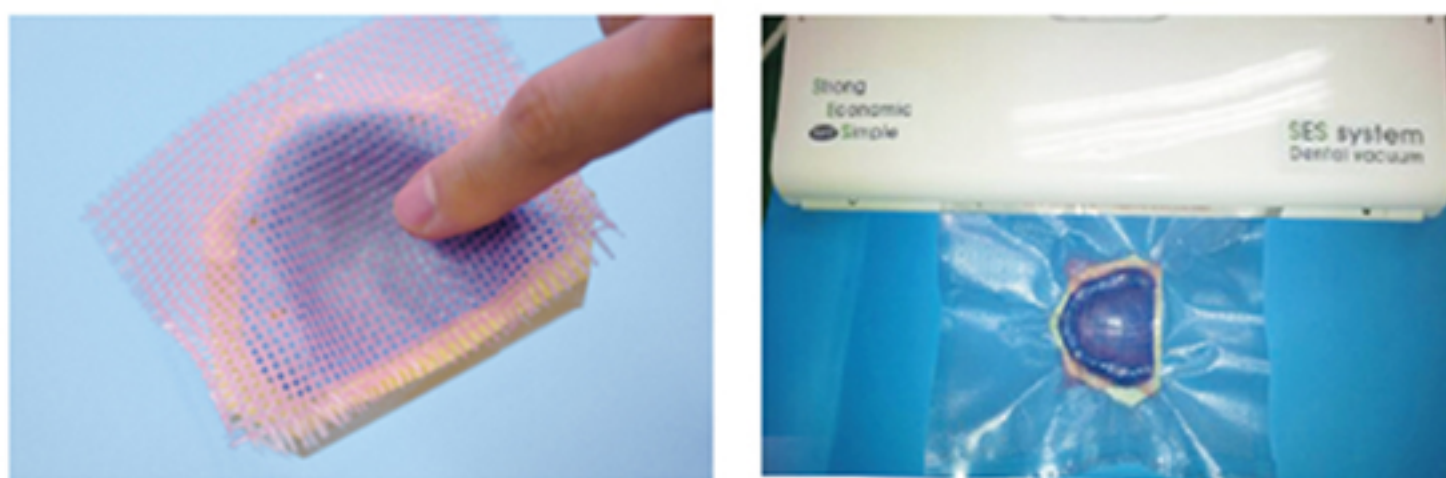
- a. Cut a sheet of SES MESH into two equal pieces using scissors before use.
- b. Check if there are any flaws or unwanted substances inside the product before use.
- c. Read the instruction thoroughly.

2. How to use

- a. Pour wax onto a plaster cast
- b. Remove wax on a certain place where resin is going to be spread.

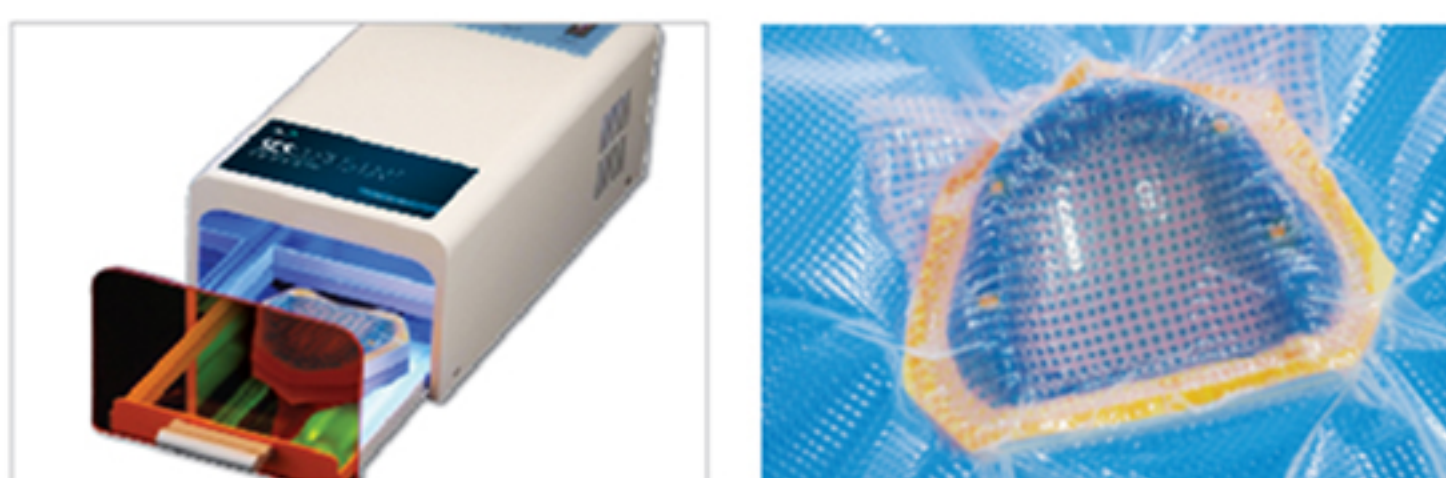


- c. Spread resin on the groove where the wax was removed.
- d. Put SES on the wax, and then put it into vacuum film.



- e. Using vacuum absorber, fix it onto plaster mold.
- f. React it, together with film, with UV
- g. Together with the model, remove the wax by pouring hot water to the product just as it came out from the curing unit and then separate the mesh.

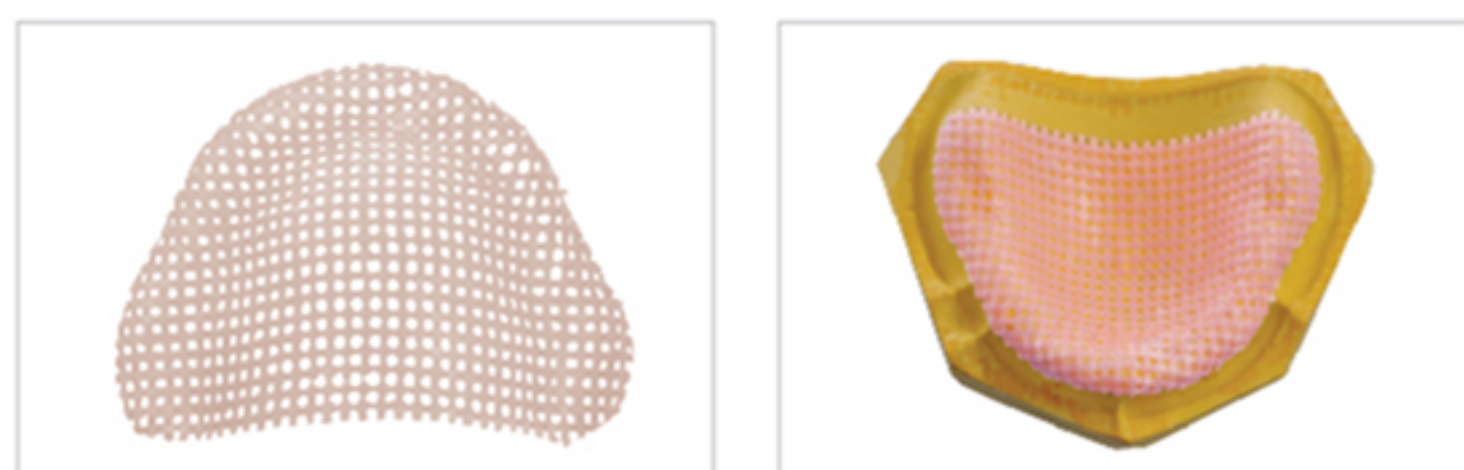
(Caution: do not separate the mesh before pouring hot water. Doing so could cause damage or deformation to the product)



- h. Cut it with scissors to the size that fits into denture.

3. Storage instruction after use

- a. Dispose after single use
- b. Store at a dry place, away from direct sunlight in a room temperature.



Cautions

1. Avoid direct sunlight during the use.
2. Finish within an hour after opening the product.
3. Pay attention that no alien substances mix into the product